

Yoga Tote



Difficulty Rating- Easy Medium Hard

Supplies:

- (1) Dishtowel (19"x28")
- 1 1/8 yd webbing strap
- FQ of coordinating fabric for top of tote and pocket
- 5/8 yd cord for drawstring
- 1 cord stop

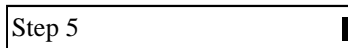
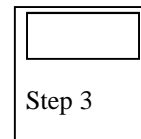
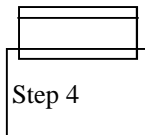


Directions:

Cutting: From fat quarter cut one piece 11"x19" for the top of the tote and one piece 5 1/2"x 18 1/2" for pocket

Instructions:

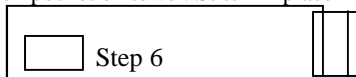
- Turn under 1/4" along each short end of top fabric and press, then turn under another 1/2" and press again. Topstitch along ends.
- Fold top in half wrong sides together and press. Topstitch 1" from the folded edge to make a casing.
- Pin top to towel 1/4" in from each side and 1/4" down from top, raw edges of top facing
- Stitch top of towel. Press top up and topstitch 1/4" from pressed edge. This will encase the raw edge.
- To make the water bottle pocket fold fabric in half lengthwise, right sides together. Sew around Pocket leaving an opening for turning. Turn right side out, press.



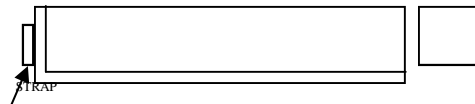
Leave opening.

- Position pocket on towel. Stitch in place

1/4" Up from bottom
1 1/2" in from side



- Fold bag in half lengthwise, right sides together. Center one end of strap along bottom edge. Stitch across the bottom and up the side. Turn tote right side out.



- Bring strap up the side without the pocket and turn under 1/2" at top of strap. Pin top of strap in place just below stitching line for casing at the top of the tote. Stitch strap in place.
- Put cord through the casing and then put the ends through the cord stop. Knot the ends of the cord to keep from sliding out of cord stop.



Creative Crafts & Frame Shop
934 NW Kings Blvd • Corvallis, OR 97330
p.541-753-7316 www.corvalliscrafts.com

Project compliments of:
Ben Franklin Crafts and Frame Shop Redmond, WA

